



# "47" Alumni Newsletter

"47" Alumni Association of the Deaf, Inc.  
(P.S. 47/J.H.S. 47/J47)  
225 East 23<sup>rd</sup> Street – Room 216  
New York, NY 10010



E-mail: alumni47@aol.com

www.47alumnirofthedeaf.com

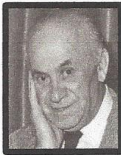
Vol. 53 No. 53

"47" Home Now and Forever

Fall/Winter 2016

## A Message from "47" Alumni Association of the Deaf, Inc.

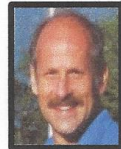
The plaques were presented by the "47" Alumni Association of the Deaf. Each plaque is dedicated to a person who achieved extraordinary accomplishments in his or her profession. Each plaque's location is listed below:



**Moses E. Josephs Auditorium -**  
First graduate in 1911



**H. William Bernstein Cafeteria -**  
First Deaf Teacher at "47"



**David M. Schwartz Gym -**  
Mentor and Coach who graduated  
in 1959



**Carrie W. Kearns Library -**  
Longest-serving principal (1910-  
1936)



**Edith Allerup Kleberg Library -**  
Librarian who graduated in 1934



**Yola Walker Lobby -**  
Assistant Principal



**Walter J. Connolly Playground -**  
First President of "47" Alumni  
Association in 1916

We express our sincere thanks and appreciation to the following administrators for their support: Former Principal Martin Florsheim, current Principal Watfa Shama, former Principal Rebecca Marshall and current Principal Dave Thacker Bowell. Most importantly, we are grateful to the families of the people honored by the plaques.

### Table of Contents

|   | Page |
|---|------|
| A Message.....                          | 1    |
| Reclaiming "47".....                    | 2    |
| The Horse Stable.....                   | 3    |
| My Wonderful Memories.....              | 4    |
| My Wonderful Memories (continued) ..... | 5    |
| Liaison's Message.....                  | 6    |
| "In Our Hearts".....                    | 7    |
| Archivist's Message.....                | 8    |
| Ken's Corner.....                       | 9    |
| Funds and Donations.....                | 10   |
| In Remembrance.....                     | 11   |
| My Autobiography of PS 47.....          | 12   |
| Principal's Corner.....                 | 13   |
| "47" Alumni Donation Fund Form .....    | 14   |
| Membership Dues Form .....              | 15   |